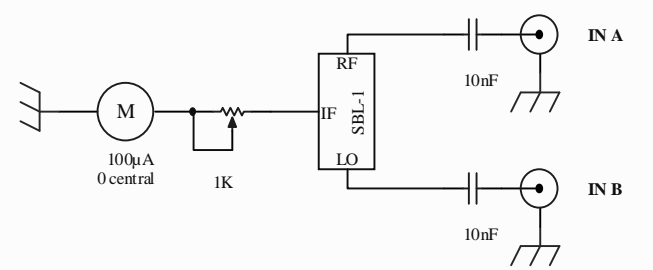


- 1 RF OUT
- 2 CHASSIS GND
- 3 RF RTN (CHASSIS GND)
- 4 CHASSIS GND
- 5 LAMP VOLT
- 6 BITE OUTPUT
- 7 EXT. C FIELD VOLTAGE ADJ.
- 8 + 24V RTN
- 9 CRYSTAL VOLTS MONITOR
- 10 POWER + 24V



Title		
10 MHz RUBIDIUM REFERENCE - F6ETI		
Size	Number	Revision
A4		
Date:	24/10/2009	Sheet of
File:	D:\DXP...\rubidium_f6eti.SCHDOC	Drawn By: PhM 13/10/2009